

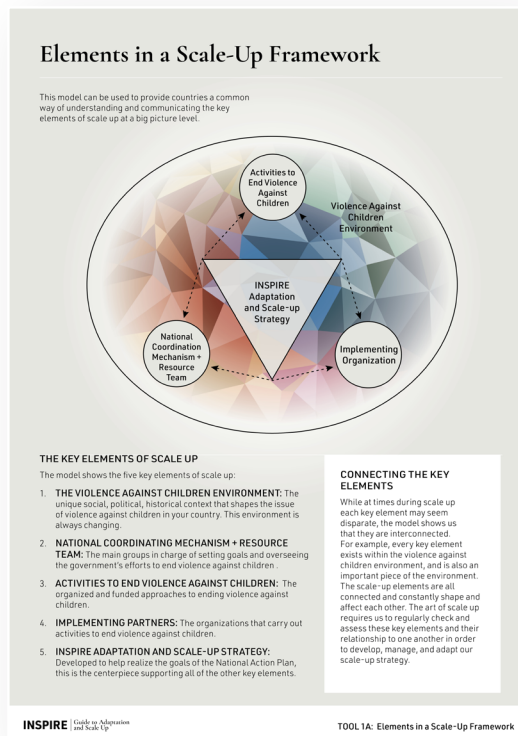


*A tool to teach and discuss the concept of scale up and create shared language and understanding.*

## TOOL 1A A Framework for Adaptation and Scale Up

A graphic depiction of the elements of scale up and how they interact.

*Adapted from: ExpandNet*

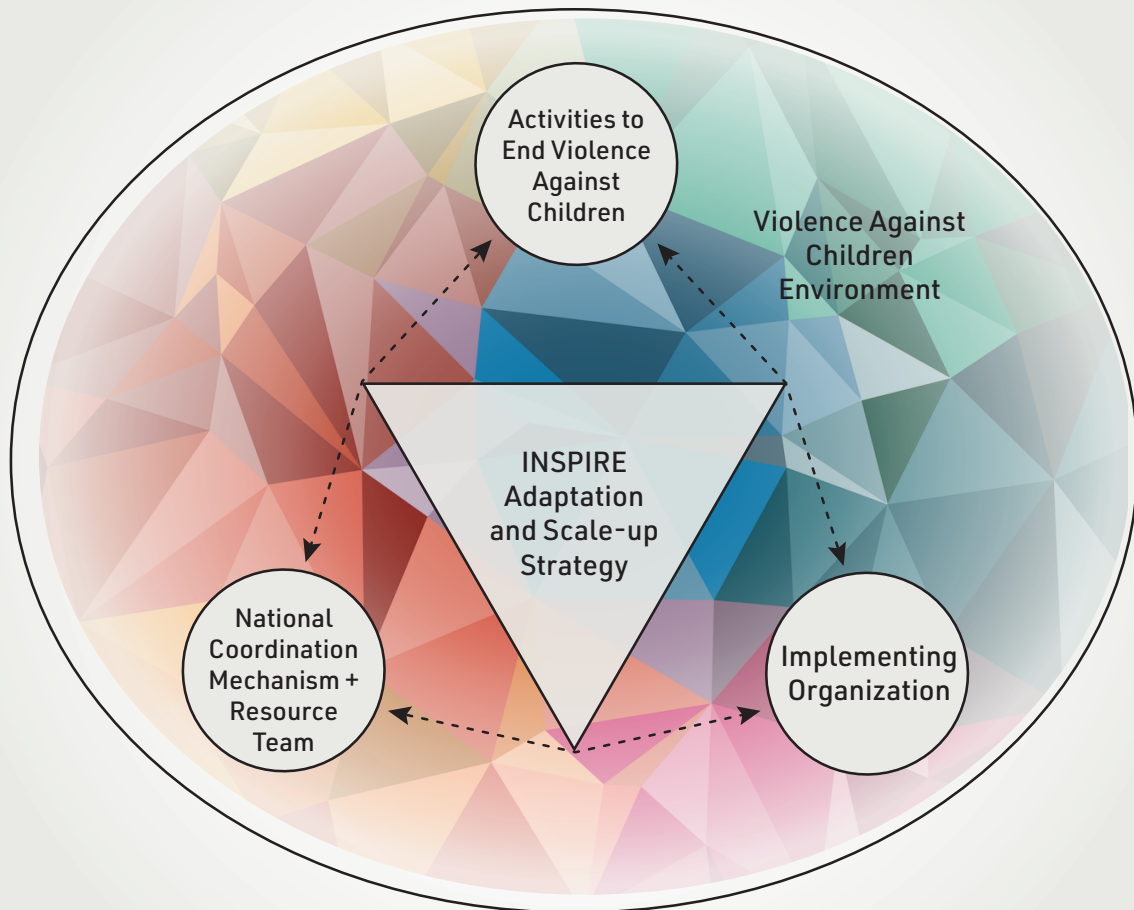


*AVAILABLE FORMATS: The worksheets included here are meant for printing at A4 size. Visit the Guide's website for downloadable interactive (fillable) PDF worksheets, alternate languages and alternative formats.*

[inspire-strategies.org/adaptationandscale](https://inspire-strategies.org/adaptationandscale)

# Elements in a Scale-Up Framework

This model can be used to provide countries a common way of understanding and communicating the key elements of scale up at a big picture level.



## THE KEY ELEMENTS OF SCALE UP

The model shows the five key elements of scale up:

- 1. THE VIOLENCE AGAINST CHILDREN ENVIRONMENT:** The unique social, political, historical context that shapes the issue of violence against children in your country. This environment is always changing.
- 2. THE NATIONAL COORDINATING MECHANISM+ RESOURCE TEAM:** The main groups in charge of setting goals and overseeing the government's efforts to end violence against children.
- 3. ACTIVITIES TO END VIOLENCE AGAINST CHILDREN:** The organized and funded approaches to ending violence against children.
- 4. IMPLEMENTING PARTNERS:** The organizations that carry out activities to end violence against children.
- 5. INSPIRE ADAPTATION AND SCALE-UP STRATEGY:** Developed to help realize the goals of the National Action Plan, this is the centerpiece supporting all of the other key elements.

## CONNECTING THE KEY ELEMENTS

While at times during scale up each key element may seem disparate, the model shows us that they are interconnected. For example, every key element exists within the violence against children environment, and is also an important piece of the environment. The scale-up elements are all connected and constantly shape and affect each other. The art of scale up requires us to regularly check and assess these key elements and their relationship to one another in order to develop, manage, and adapt our scale-up strategy.